

Liu Yuyang creates a station space in his project **Cidi Memo iTown**, responding to the site's context and memory. Inspired by the image of a passing train, as there are several railroads near the building, the station is also a reflection of historical and archetypal models. Similarly, O-office Architects' **Lianzhou Museum of Photography** offers visitors alternating visual experiences between everyday life of the old city and contemporary photographic art. Atelier Archmixing's **Huashu Rural Studio** is also a place of culture in the countryside. Designed as a rural studio, it attracts both locals and booklovers from the city to experience a traditional Chinese lifestyle of reading. Urban

Environment Design Magazine invites a group of internationally renowned architects to create their vision for the countryside with architecture and culture. Three architects' projects—Li Xinggang, Ryue Nishizawa, and Seung H-Sang—are included here. Together, a camping base service center, a concert hall, and a reception center and other facilities form a cultural infrastructure for the countryside. This is also the focus of Lü Pinjing's **Banwan Village Reconstruction** in which a new rural cultural activity center is added to its existing primary school. The combination of educational and cultural facility enriches rural lives and attempts to regenerate local culture.

CIDI MEMO, A TOWN OF MEMORY

Design team: Liu yuyang, Lin Yilin, Li Ning, Ji Yuanmei, Lyu Jiajun

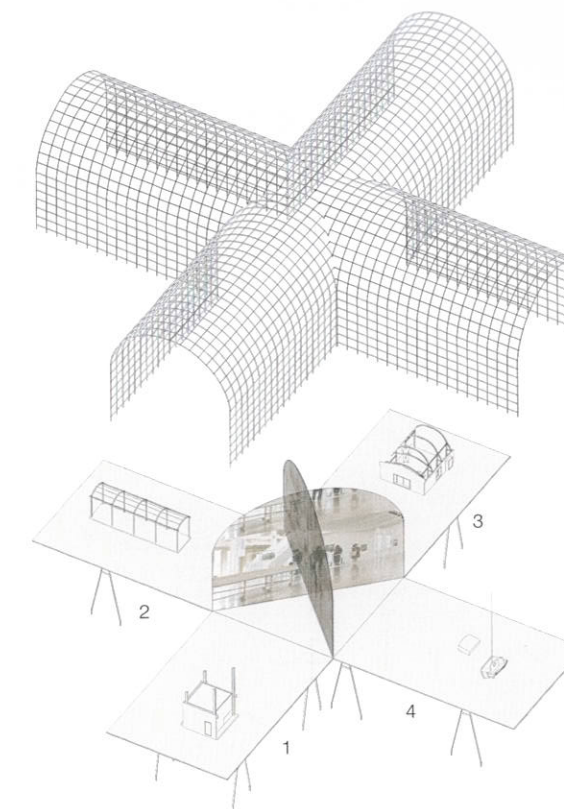
Materials: Steel plates and rods, multimedia images and models

Area: 10 square meters (4.8x4.8x2 meters)

Cidi Memo, a Town of Memory is an architectural installation project on the Cidi Memo cultural-creative town. Using 2100 units of steel gusset tectonic plates, a 10-square-meter space-rich structure is created to display a set of four thematic modules: structural, programmatic, landscape, information. Through prototype reconstruction, the installation intends to illustrate a narrative of the space in terms of its accidental birth, random growth, unavoidable future, and the eventual cultural renaissance.

A kind of in-between, the place emerged as a result of several railways cutting through, generating a large amount of low-quality industrial storage spaces that have been subsequently retrofitted and rebuilt into a new cultural-creative town. The upgrades and transformations of these spaces brought an influx of people and businesses, as well as organic and unpredictable

changes of lifestyle, creating a new synergy for the community and momentum for growth. Passenger and cargo trains still passing through the site every few minutes vividly reminds us—like a movie scene—of the brevity of history and breath of imagination for this place. In this regard, the meaning and value of architecture is closer to those of a continuously operating transport infrastructure. Architecture becomes a two-way synchronized “cultural infrastructure,” providing spaces for cultural production on one hand, and transporting cultural contents, services, and products on the other hand. Since its opening in December, 2016, the curatorial events and operational efforts conducted at Cidi Memo Town have demonstrated a new possibility for the design-driven cultural-creative model that can serve as an exemplary case study for many other future places in China.



Axonometric exploded diagram

1. Structural module
2. Programmatic module
3. Information module
4. Landscape module

CIDI MEMO ITOWN

Liu Yuyang | Atelier Liu Yuyang Architects

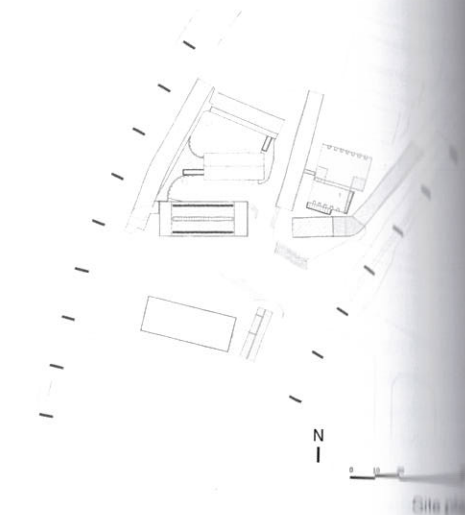
Location: Chaoyang District, Beijing
Architect: Atelier Liu Yuyang Architects
Principal architects: Liu Yuyang
Project architect: Li Ning
Design team: Che Peiping, Wu Yaping, Lian Funing, Yang Ke, Che Jin, Luo Kun, Wang Xiaoling
Structural consultant: Shanghai Yuangui Structural Des. Firm Inc.
Lighting consultant: Unolai Design
Structure: Steel structure
Area: 5500 square meters (site); 6300 square meters (building)
Design period: December 2015–June 2016
Construction period: March–December 2016
Photography: Xia Zhi, Zhu Siyu

The project is located between Beijing's 4th East Ring Road and 5th East Ring Road. Several railroads intersect and divide the site into fragments. We consider the site uncultivated land, isolated, and forgotten while the rest of the urban fabric undergoes rapid development. Primitive vitality is hidden in these broken warehouses, and we saw the potential to create a secret garden in the urban desert.

The site, covering an area of 140,000 square meters, will be revitalized by bringing in cultural and creative industries. As the first party to intervene on this site, we were involved in the building renovation of Startup Block and interior design of the sales office. Startup Block contains three zones: Zone A has a sales office and boutique hotel; Zone B has a mockup office; and Zone C has a restaurant. The total area is 6000 square meters.

One of the greatest challenges of the concept design was tailoring the complex warehouse space to fit its new purpose, as well as increasing overall floor area ratio without altering the building footprint. We connected the warehouses, restructured the spatial organization, and placed public programs at the heart of Startup Block. This strategy brought forward the resulting Station space.

Steel structures offered us greater creative flexibility and naturally became our first choice for the renovation project. The silver, vaulted, carriage-like design was inspired by the image of a passing train. The vault is also a reflection of historical archetypal temples, libraries, and stations. In the sales office, a variant on this vault design houses a floating mezzanine. Curved elements were also applied to façade design as well as door and window details, giving the rough industrial mass a more refined and humane touch.

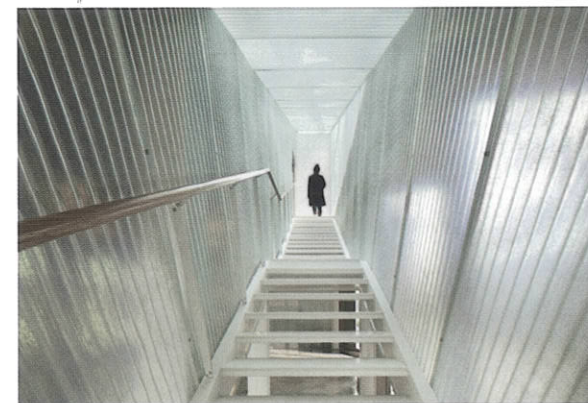
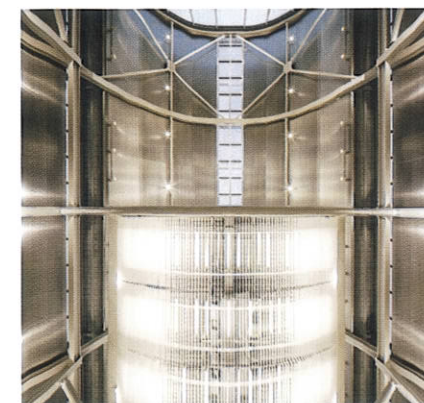


The composition of the façade is a continuation of the old structure and the new, a contrast between the heavy masonry and the light curtain wall. We used volcanic rock, gray brick, and red brick to underline the heaviness and roughness of the original masonry. On the added volumes, curtain walls with different degrees of translucency, ranging from gray steel sheet and polycarbonate panel to clear glass, were applied.

The Station, an expansion of the sales office space, is reserved for business talks. The name comes from the 9-meter-high western curtain wall that faces the central rail track. A triangular terrazzo bar and a double-sided clock form the centerpiece. The ceiling was finished with backlit corrugated polycarbonate, adorned with a clock and spherical pendant lamps. Inside the Station, as the train passes by occasionally, we are able to imagine a surreal, retro experience.



Cidi Memo iTown next to the railway track



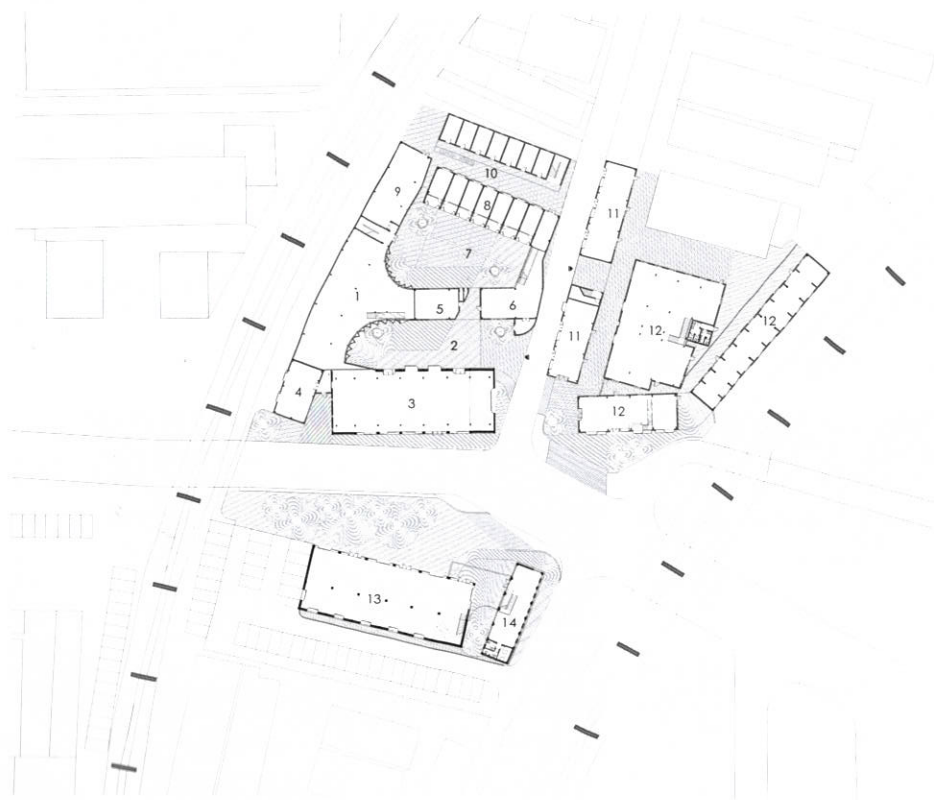
1. The curved surfaces of station courtyard and the shark-fish gill-shaped window
 2. Zone A exhibition hall mezzanine space and the signal tower at a distance
 3. Zone A exhibition hall silver acoustic ceiling, along with linear light embellishing the mezzanine
 4. The staircase is pure and translucent. Walking inside is like passing through a glass world.



Contrast of various materials, including glass curtain wall, red brick, dark-gray steel panel, and silver corrugated steel panel

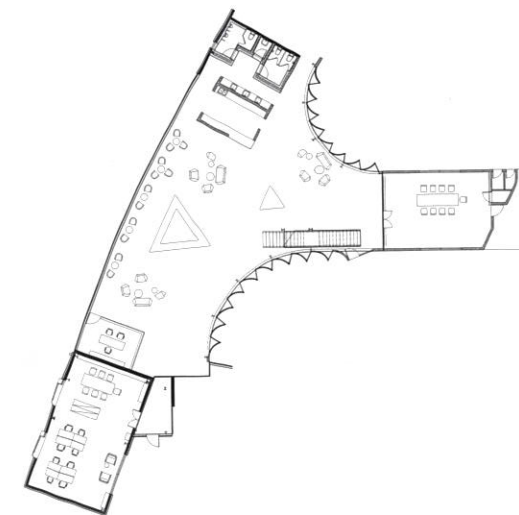
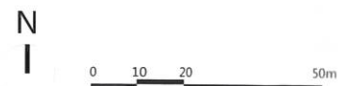


Station space in Zone A

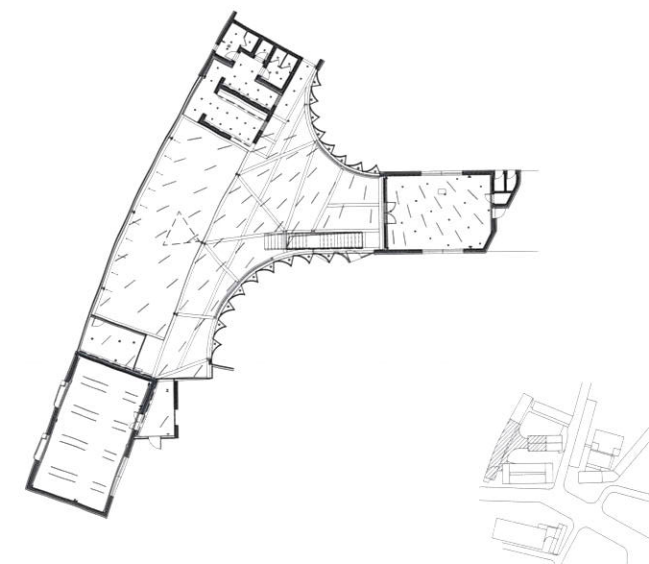


First-floor plan

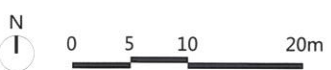
1. Station
2. Station courtyard
3. Sales center
4. Sales office
5. Meeting room
6. Hotel foyer
7. Hotel courtyard
8. Guest room
9. Facility kitchen
10. Guest room courtyard
11. Commerce
12. Office
13. Restaurant
14. Café



Station floor plan



Station ceiling plan

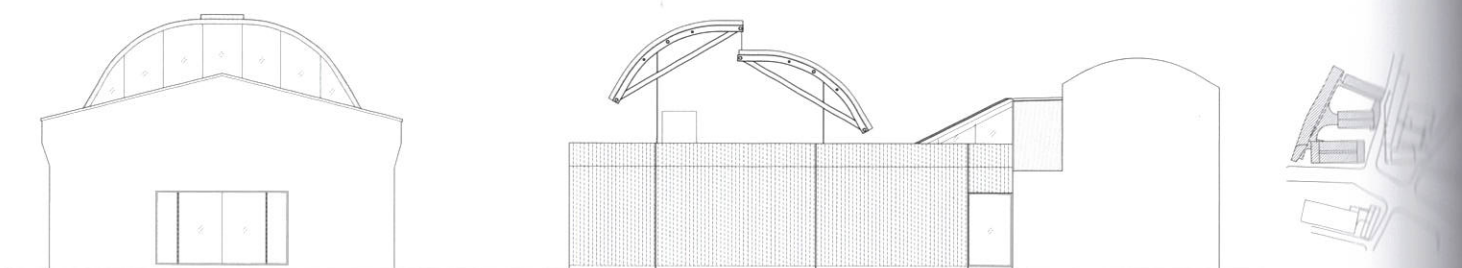




Pure white steel structure and suspended mezzanine in the sales center

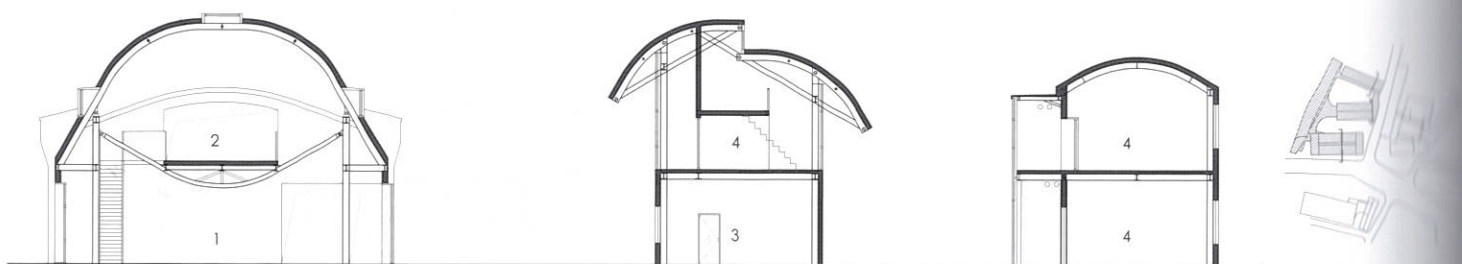


Pedestrian bridge view at upper level at section



Zone A elevation

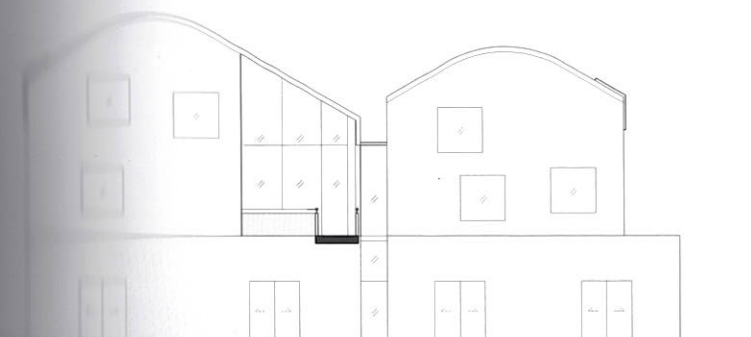
0 2 5 10



Zone A section

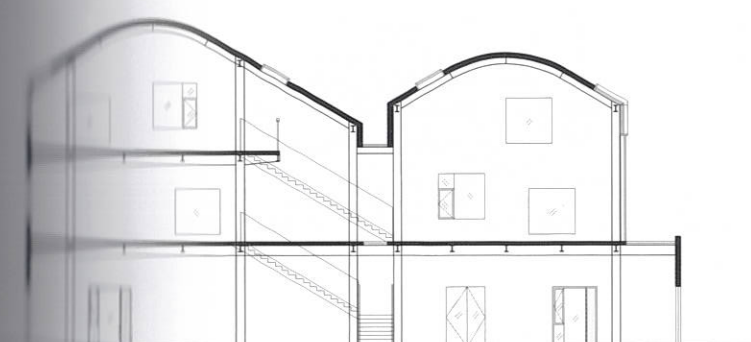
- 1. Sales center
- 2. Cidi Memo showroom
- 3. Hotel foyer
- 4. Guest room

0 2 5 10



Zone B elevation

0 2 5 10



Zone B section

0 2 5 10